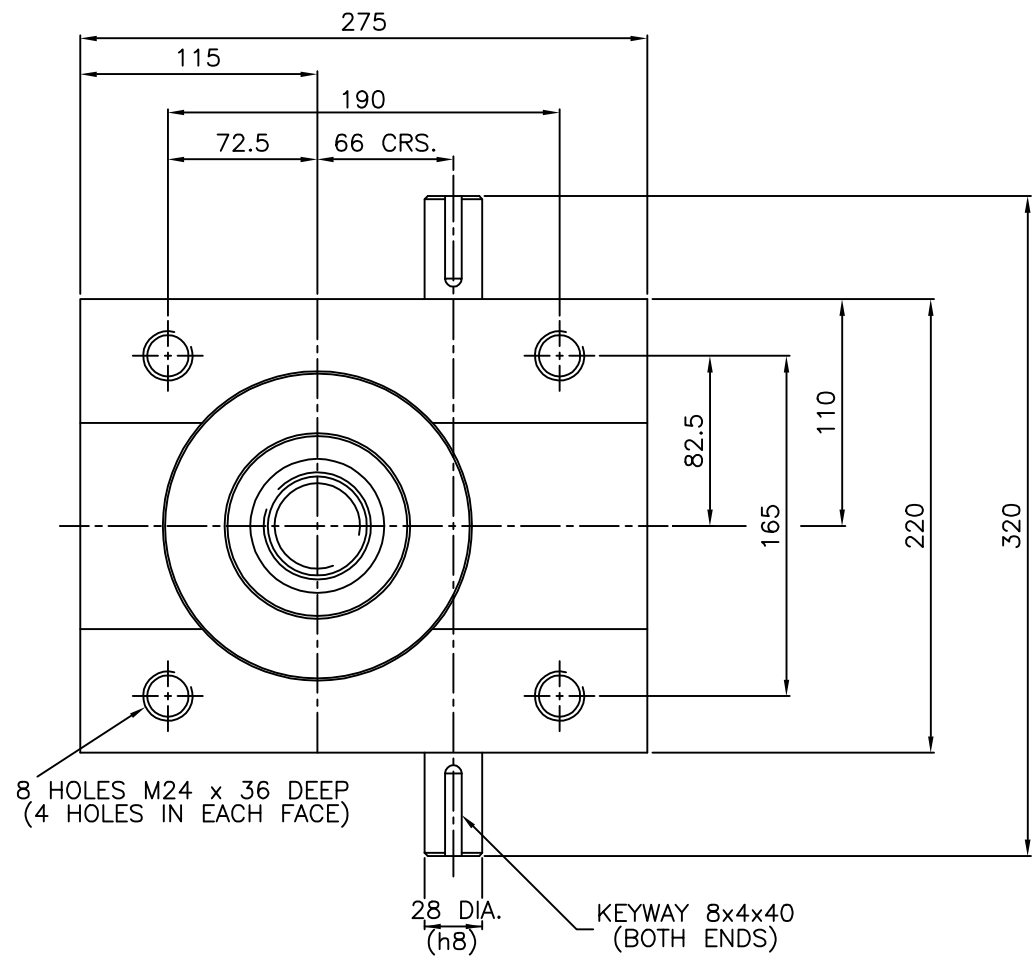


# Power Jacks

POWER JACKS LTD.  
 "SYM-METRIC"  
 RANGE OF CUBIC METRIC ACTUATORS  
 DESIGNED AND MANUFACTURED IN THE UK  
 200 KN RATED CAPACITY  
 STANDARD TRANSLATING SCREW  
 65mm DIA. X 12mm PITCH MACHINE SCREW

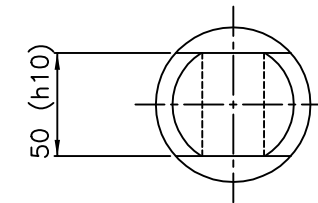
ST200-\*\*\*\*-E1R0-CPC100B (THREADED END)  
 ST200-\*\*\*\*-T1R0-CPC100B (TOP PLATE)  
 ST200-\*\*\*\*-C1R0-CPC100B (CLEVIS END)

\*\*\*\* = RAISE IN MM  
 REFER TO PRODUCT CODE FOR VARIANT SPECIFICATION.



TOP PLATE

IF TOP PLATES OR CLEVIS ENDS ARE NOT ALREADY FITTED, IT WILL BE NECESSARY TO DRILL-DIMPLE LIFTING SCREW THREADING TO ACCOMMODATE CUP-POINTS OF LOCKING-SCREWS.  
 NOTE - DIMPLE TO FULL DIAMETER OF DRILL TO 1mm-1.5mm BELOW ROOT DIA. OF THREAD.



CLEVIS END

