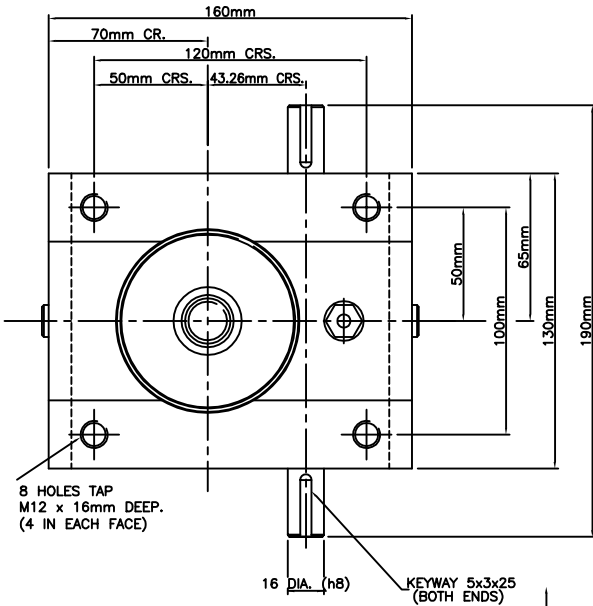
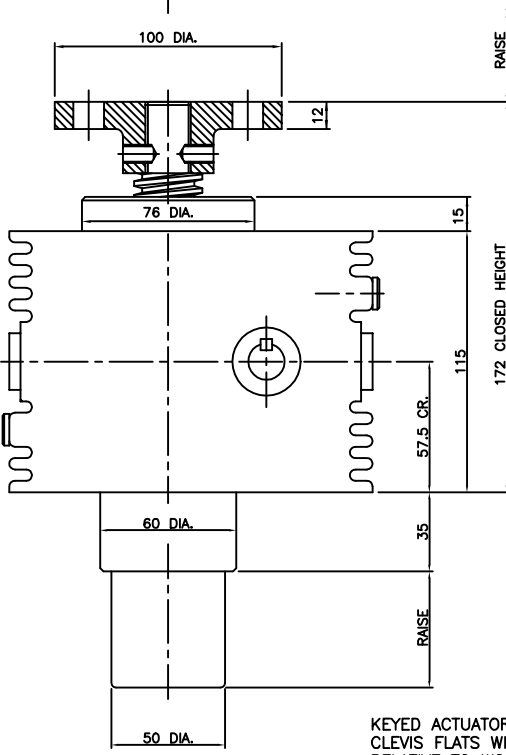
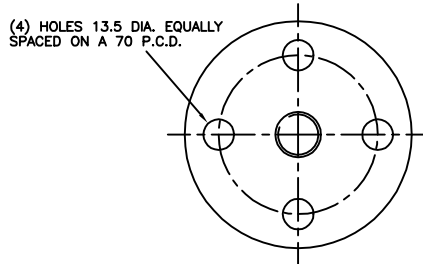


Power Jacks



POWER JACKS LTD.
"SYM-METRIC"
RANGE OF CUBIC METRIC ACTUATORS
DESIGNED AND MANUFACTURED IN THE UK
25 KN RATED CAPACITY
STANDARD TRANSLATING SCREW WITH KEYED
ANTI-BACKLASH SYSTEM
30mm DIA. X 6mm PITCH MACHINE SCREW

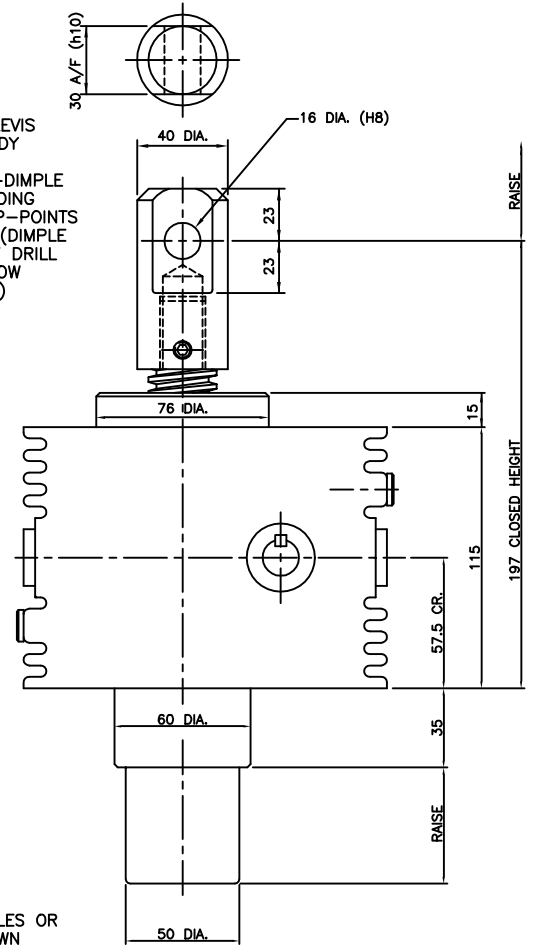


TOP PLATE

ST025-****-E1RY-CPC100B (THREADED END)
ST025-****-T1RY-CPC100B (TOP PLATE)
ST025-****-C1RY-CPC100B (CLEVIS END)

**** = RAISE IN MM
REFER TO PRODUCT CODE FOR VARIANT
SPECIFICATION.

IF TOP PLATES OR CLEVIS
ENDS ARE NOT ALREADY
FITTED, IT WILL BE
NECESSARY TO DRILL-DIMPLE
LIFTING SCREW THREADING
TO ACCOMMODATE CUP-POINTS
OF LOCKING SCREWS (DIMPLE
TO FULL DIAMETER OF DRILL
TO 1mm-1.5mm BELOW
ROOT DIA. OF THREAD)



CLEVIS

KEYED ACTUATORS :- TOP PLATE BOLT HOLES OR
CLEVIS FLATS WILL BE POSITIONED AS SHOWN
RELATIVE TO WORM CENTRE LINE UNLESS
OTHERWISE CALLED FOR.