

Power Jacks

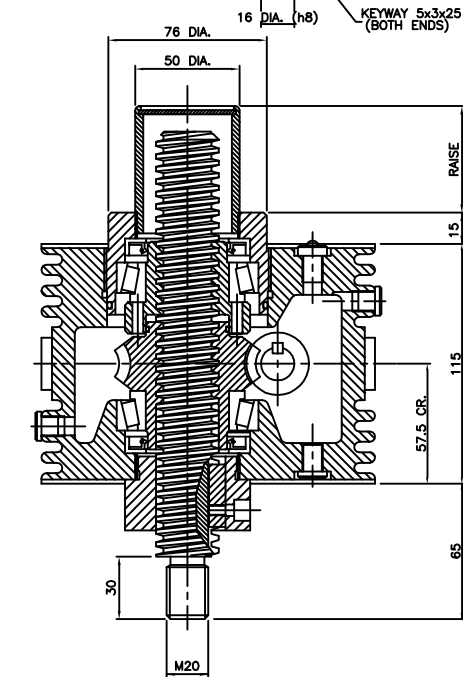
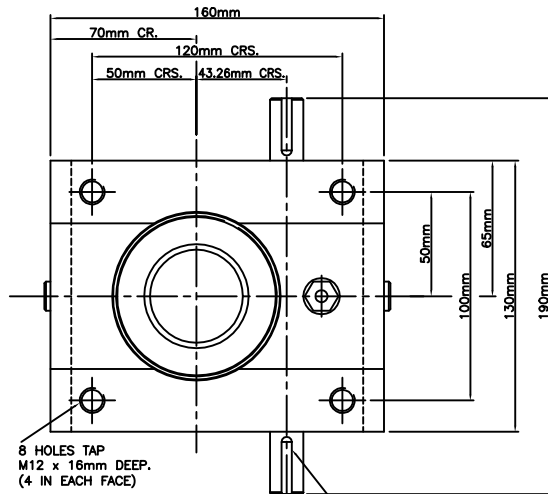
POWER JACKS LTD.

"SYM-METRIC"

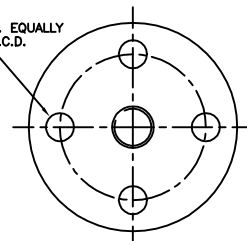
RANGE OF CUBIC METRIC ACTUATORS
DESIGNED AND MANUFACTURED IN THE UK
25 KN RATED CAPACITY
KEYED ANTI-BACKLASH SYSTEM WITH INVERTED
TRANSLATING SCREW
30mm DIA. X 6mm PITCH MACHINE SCREW

ST025-****-E1RW-CPC100B (THREADED END)
ST025-****-T1RW-CPC100B (TOP PLATE)
ST025-****-C1RW-CPC100B (CLEVIS END)

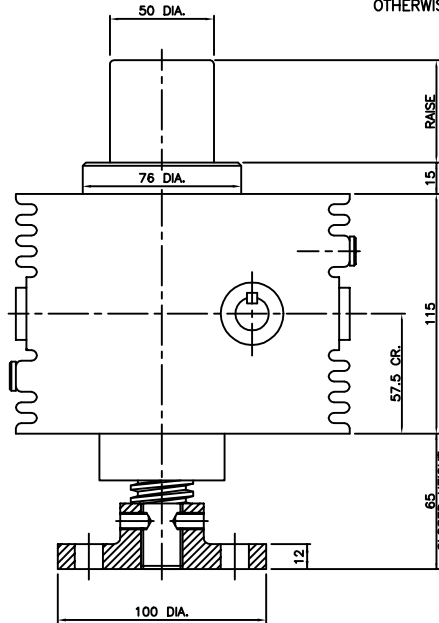
**** = RAISE IN MM
REFER TO PRODUCT CODE FOR VARIANT
SPECIFICATION.



(4) HOLES 13.5 DIA. EQUALLY
SPACED ON A 70 P.C.D.



TOP PLATE



KEYED ACTUATORS :- TOP PLATE BOLT HOLES OR
CLEVIS FLATS WILL BE POSITIONED AS SHOWN
RELATIVE TO WORM CENTRE LINE UNLESS
OTHERWISE CALLED FOR.

CLEVIS

