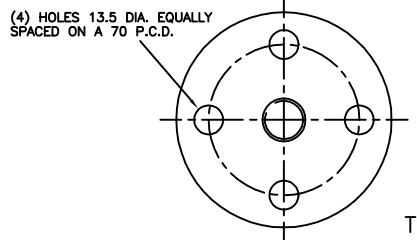
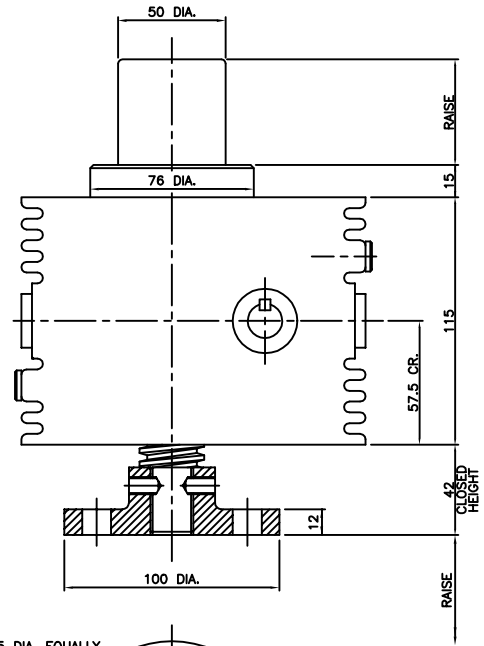
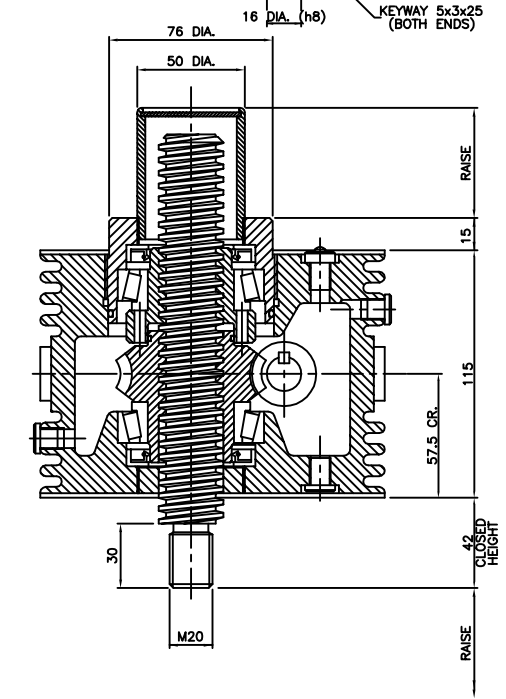


# Power Jacks

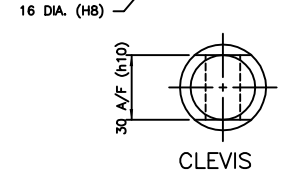
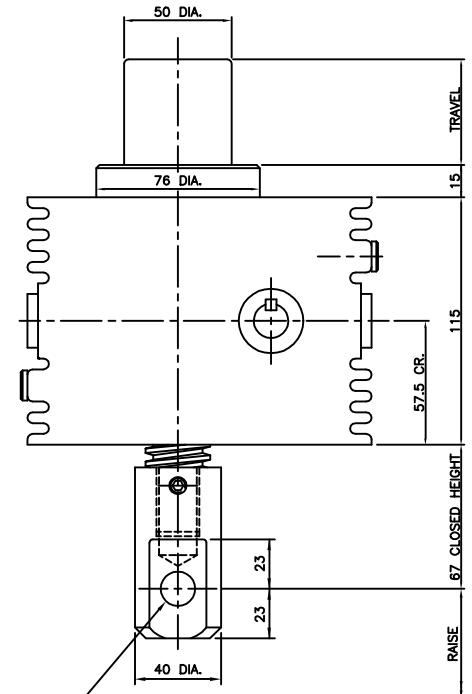
POWER JACKS LTD.  
 "SYM-METRIC"  
 RANGE OF CUBIC METRIC ACTUATORS  
 DESIGNED AND MANUFACTURED IN THE UK  
 25 KN RATED CAPACITY  
 ANTI-BACKLASH WITH INVERTED TRANSLATING SCREW  
 30mm DIA. X 6mm PITCH MACHINE SCREW

ST025-\*\*\*\*-E1RV-CPC100B (THREADED END)  
 ST025-\*\*\*\*-T1RV-CPC100B (TOP PLATE)  
 ST025-\*\*\*\*-C1RV-CPC100B (CLEVIS END)

\*\*\*\* = RAISE IN MM  
 REFER TO PRODUCT CODE FOR VARIANT SPECIFICATION.



TOP PLATE



CLEVIS

IF TOP PLATES OR CLEVIS ENDS ARE NOT ALREADY FITTED, IT WILL BE NECESSARY TO DRILL-DIMPLE LIFTING SCREW THREADING TO ACCOMMODATE CUP-POINTS OF LOCKING SCREWS (DIMPLE TO FULL DIAMETER OF DRILL TO 1mm-1.5mm BELOW ROOT DIA. OF THREAD)