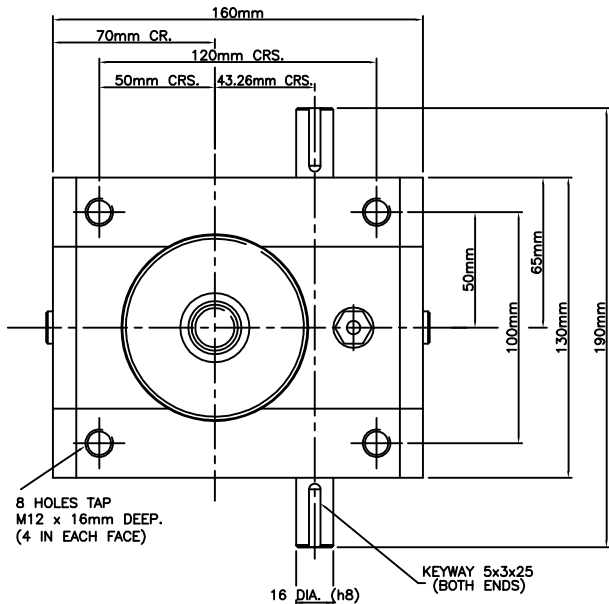
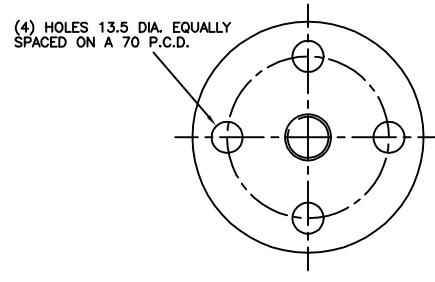


Power Jacks



8 HOLES TAP
M12 x 16mm DEEP.
(4 IN EACH FACE)

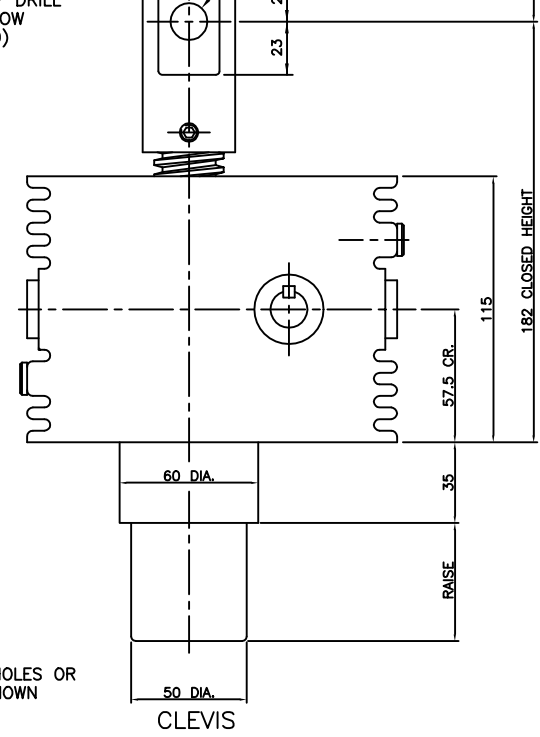
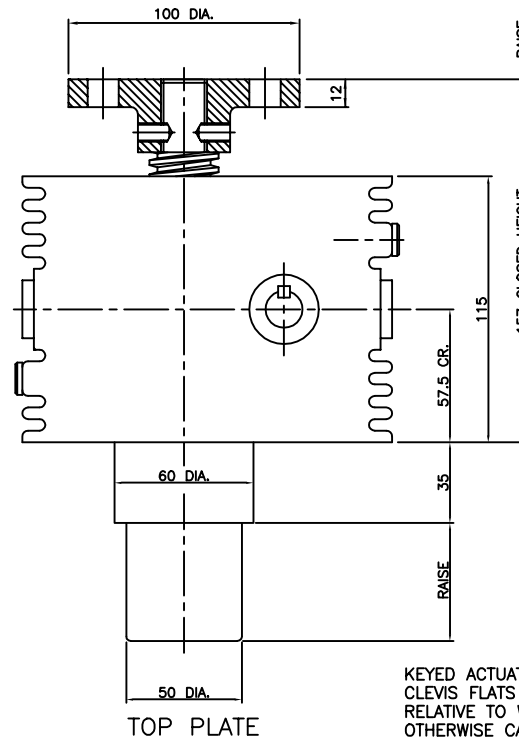
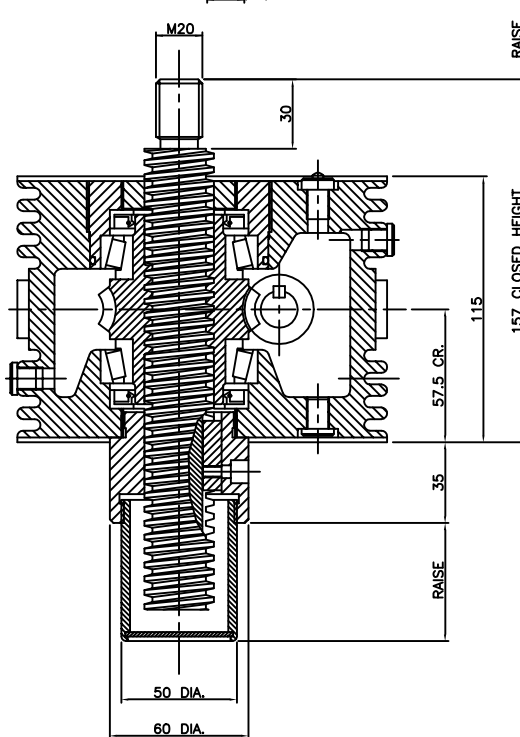
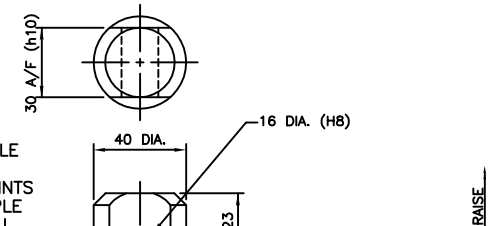
POWER JACKS LTD.
"SYM-METRIC"
RANGE OF CUBIC METRIC ACTUATORS
DESIGNED AND MANUFACTURED IN THE UK
25 KN RATED CAPACITY
KEYED TRANSLATING SCREW
30mm DIA. X 6mm PITCH MACHINE SCREW



ST025-****-E1RK-CPC100B (THREADED END)
ST025-****-T1RK-CPC100B (TOP PLATE)
ST025-****-C1RK-CPC100B (CLEVIS END)

**** = RAISE IN MM
REFER TO PRODUCT CODE FOR VARIANT SPECIFICATION.

IF TOP PLATES OR CLEVIS ENDS ARE NOT ALREADY FITTED, IT WILL BE NECESSARY TO DRILL-DIMPLE LIFTING SCREW THREADING TO ACCOMMODATE CUP-POINTS OF LOCKING SCREWS (DIMPLE TO FULL DIAMETER OF DRILL TO 1mm-1.5mm BELOW ROOT DIA. OF THREAD)



KEYED ACTUATORS :- TOP PLATE BOLT HOLES OR CLEVIS FLATS WILL BE POSITIONED AS SHOWN RELATIVE TO WORM CENTRE LINE UNLESS OTHERWISE CALLED FOR.