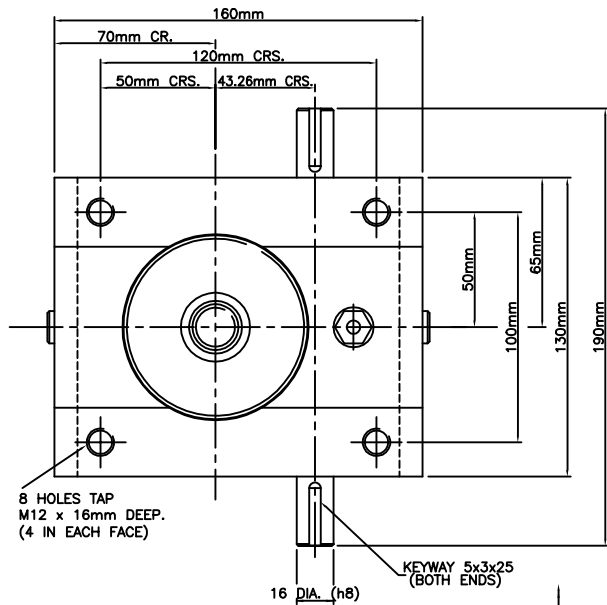
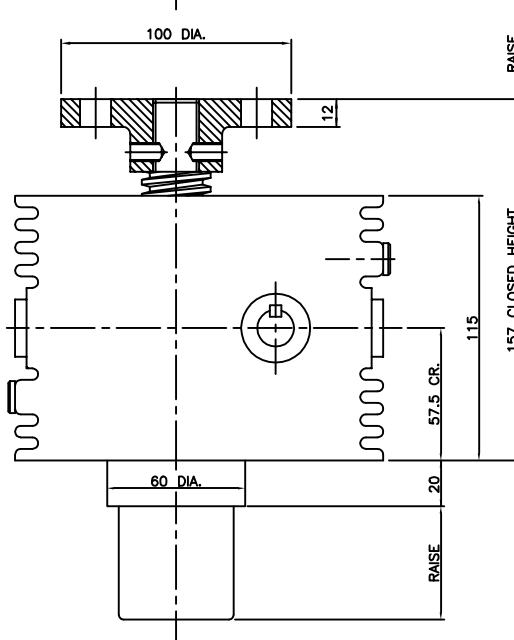
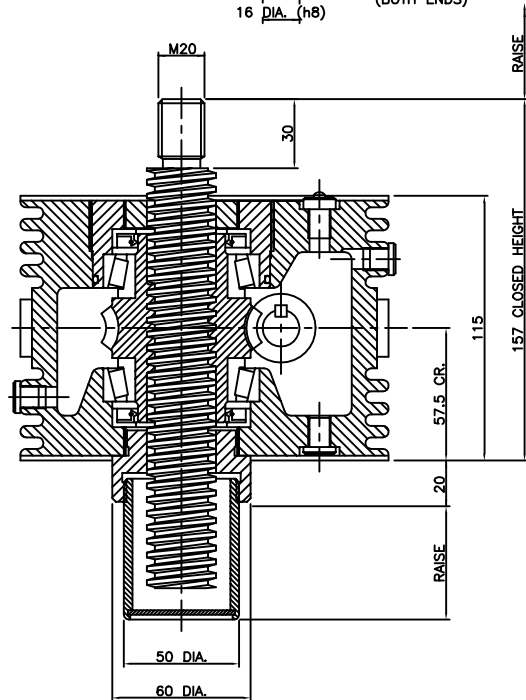
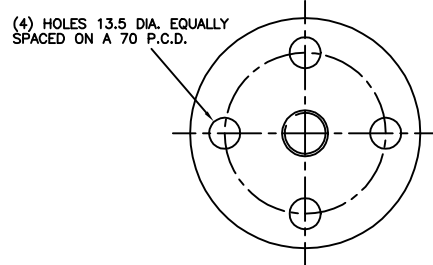


# Power Jacks



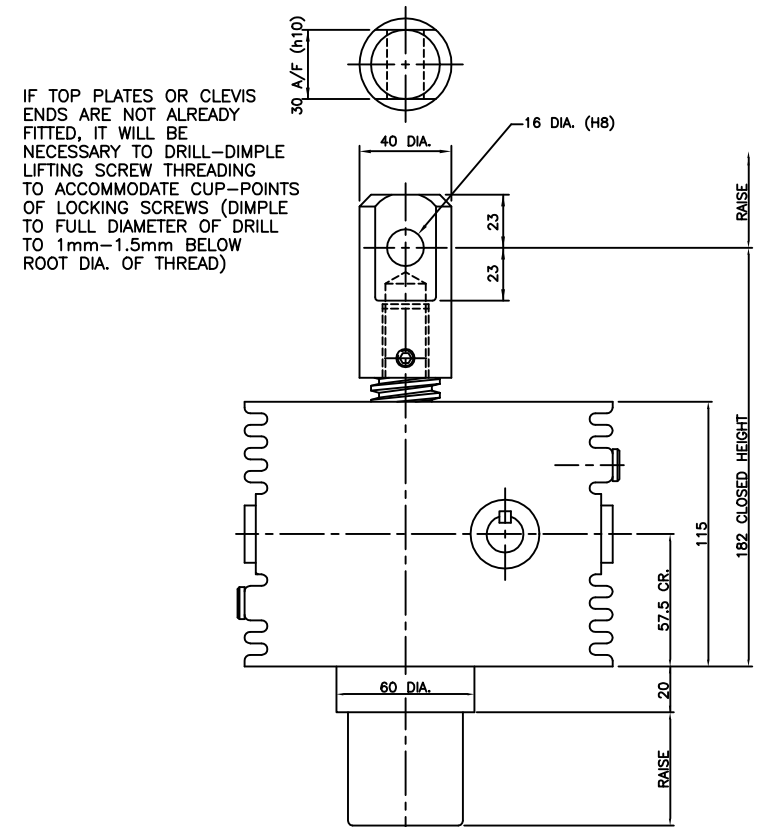
POWER JACKS LTD.  
 "SYM-METRIC"  
 RANGE OF CUBIC METRIC ACTUATORS  
 DESIGNED AND MANUFACTURED IN THE UK  
 25 KN RATED CAPACITY  
 TRANSLATING SCREW WITH SECONDARY GUIDE  
 30mm DIA. X 6mm PITCH MACHINE SCREW



TOP PLATE

ST025-\*\*\*\*-E1RC-CPC100B (THREADED END)  
 ST025-\*\*\*\*-T1RC-CPC100B (TOP PLATE)  
 ST025-\*\*\*\*-C1RC-CPC100B (CLEVIS END)

\*\*\*\* = RAISE IN MM  
 REFER TO PRODUCT CODE FOR VARIANT SPECIFICATION.



CLEVIS