

# Power Jacks

POWER JACKS LTD.

"SYM-METRIC"

RANGE OF CUBIC METRIC ACTUATORS  
DESIGNED AND MANUFACTURED IN THE UK  
25 KN RATED CAPACITY

STANDARD TRANSLATING SCREW TYPE  
30mm DIA. X 6mm PITCH MACHINE SCREW

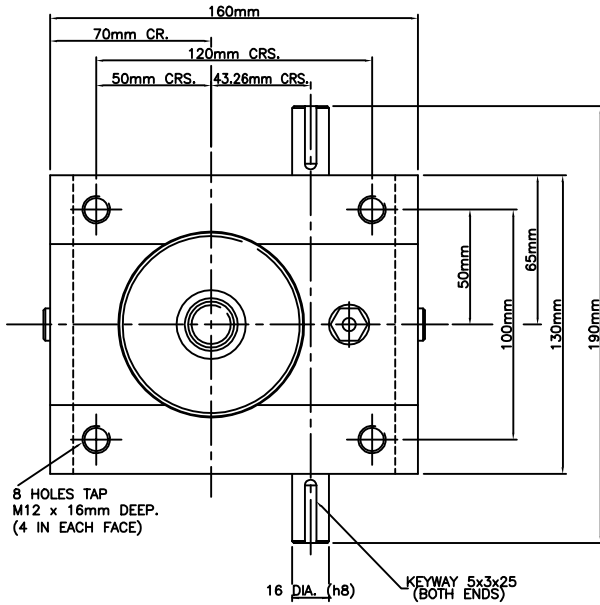
ST025-\*\*\*\*-E1R0-CPC100B (THREADED END)

ST025-\*\*\*\*-T1R0-CPC100B (TOP PLATE)

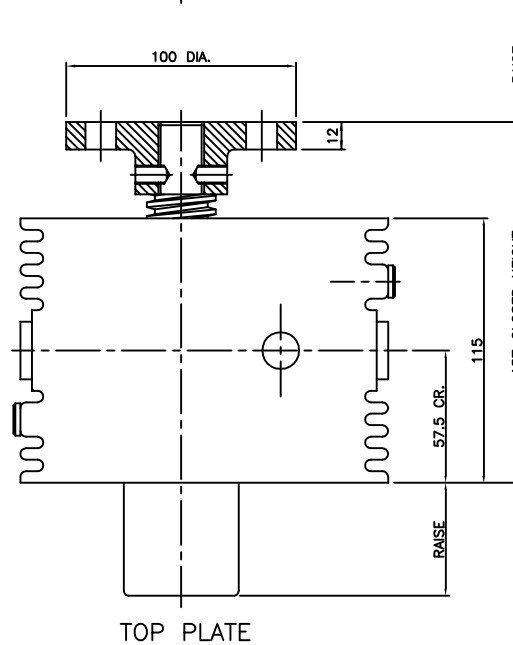
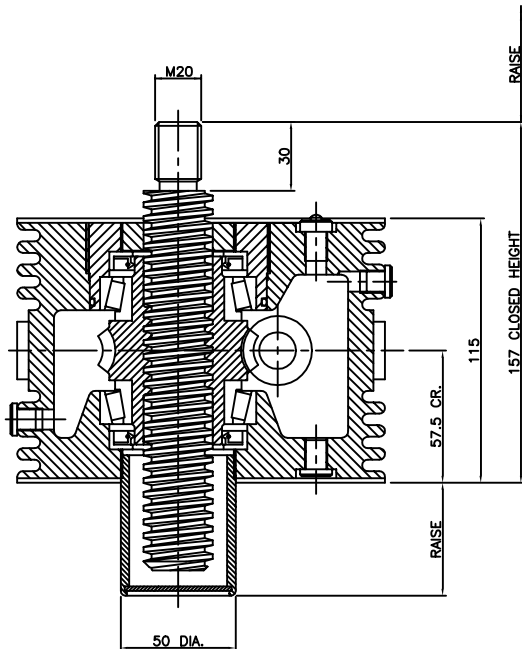
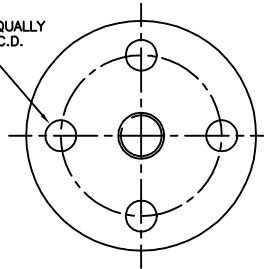
ST025-\*\*\*\*-C1R0-CPC100B (CLEVIS END)

\*\*\*\* = RAISE IN MM

REFER TO PRODUCT CODE FOR VARIANT SPECIFICATION.



(4) HOLES 13.5 DIA. EQUALLY  
SPACED ON A 70 P.C.D.



IF TOP PLATES OR CLEVIS  
ENDS ARE NOT ALREADY  
FITTED, IT WILL BE  
NECESSARY TO DRILL-DIMPLE  
LIFTING SCREW THREADING  
TO ACCOMMODATE CUP-POINTS  
OF LOCKING SCREWS (DIMPLE  
TO FULL DIAMETER OF DRILL  
TO 1mm-1.5mm BELOW  
ROOT DIA. OF THREAD)

